

Elements Of Art Through Photography

Robert N Morley
Arts & Communications Pathway
Sept 2017

Line-is a mark with greater length than width. Lines can be horizontal, vertical, or diagonal; straight or curved; thick or thin.

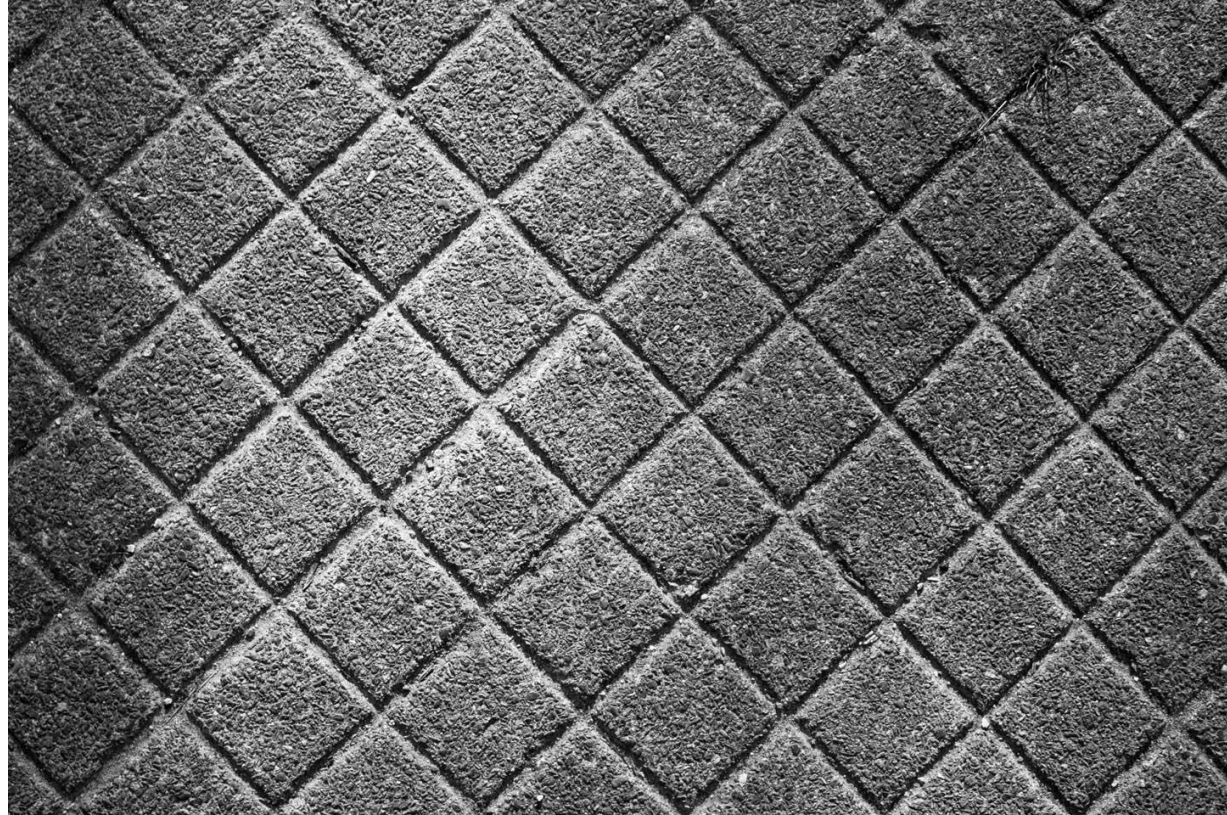


Shape

is a closed line.

Shapes can be geometric, like squares and circles; or organic, like free-form or natural shapes.

Shapes are flat and can express length and width.



Shape

&

Line



Forms

are three-dimensional shapes expressing length, width, and depth. Balls, cylinders, boxes, and pyramids are forms



Space

is the area between and around objects. The space around objects is often called negative space; negative space has shape. Space can also refer to the feeling of depth. Real space is three-dimensional



Color

is light reflected off of objects.

Color has three main characteristics:

Hue (the name of the color, such as red, green, blue, etc.),

Value (how light or dark it is),

And intensity

(how bright or dull it is).



Texture

is the surface quality that can be seen and felt.

Textures can be rough or smooth, soft or hard.

Textures do not always feel the way they look; for example, a drawing of a porcupine may look prickly, but if you touch the drawing, the paper is still smooth.



Value

The lightness or darkness of tones or colors.

White is the lightest value; black is the darkest.

